

## **TORBAY PROTOCOL**

# MULTI AGENCY RESPONSE TO CHILDREN AND YOUNG PEOPLE INVOLVED IN SUBSTANCE MISUSE



**Agreed by Young People's Substance Misuse Group: April 2011**

<b>Contents</b>	<b>Page</b>
Aims and purpose of Multi Agency Substance Screening Tool (MASST) .....	3
Overview of the Tier system .....	4
Where Does Your Agency Fit Within The Tier System? .....	4
Flowchart to show Multi Agency Protocol for Children and Young People Involved in Substance Misuse, Including Alcohol.....	7
Referral form.....	8
MASST in the wider context .....	12
Specialist substance misuse assessment .....	14
Substance misuse as a safeguarding issue .....	14
The Criminal Law and Substance misuse. ....	16
Local Contact Details:.....	17
References .....	21
Further Information .....	21

# **Aims and purpose of Multi Agency Substance Screening Tool (MASST)**

There are various drug and alcohol screening tools that can help a worker to screen a young person's drug and alcohol use. These include ASSET (used by YOT) and APIR (used by Connexions PAs). If your agency does not use its own screening tool then it is recommended that workers use the Multi Agency Substance Screening Tool (MASST).

## ***What is MASST aiming to establish?***

MASST aims to establish five things about a young person's substance use / misuse.

- Level of use
- Level of knowledge of substances
- Level of harm/risk associated with use (including child protection concerns)
- Whether a referral of joint working is required
- What advice and information work needs to be carried out?

## ***Who should use MASST?***

Staff working with young people in all youth orientated services who have some drug and alcohol experience and youth specialist knowledge. This will include staff working with young people in the voluntary sector such as youth workers, youth counsellors, social workers, mentors, Connexions staff, some specialist primary care workers, child protection teachers and school nurses amongst others.

In order to use MASST effectively staff will need to have accessed substance use/misuse awareness training and be competent in the following areas:

- Reasonable knowledge of a range of substances
- Appreciation of the different contexts within which young people use/misuse drugs.
- Clarity of legal responsibilities
- Knowledge of local support and help
- Integrating MASST within policy
- Assessing levels of risk and motivation to change
- Delivering low threshold harm reduction advice and information

Training specifically designed to enable effective use of MASST is available in Torbay.

## ***When should MASST be carried out and with whom?***

- When a young person requests help concerning substance misuse
- In response to a substance use / misuse incident
- If you (or someone else) has concerns that the young person's substance use may be causing problems of any sort
- If you feel that the young person's life style/circumstances are likely to mean they are more vulnerable to substance misuse.

The most effective screening will take place when the young person has a positive relationship with the worker or agency and feels comfortable completing MASST.

It is best therefore if the young person decides which agency and staff member takes them through the screening process.

The emphasis must be on securing the setting that best suits the young person.

Young people also have a right to decide not to complete it.

## **Principles governing MASST**

MASST should be:

- Integrated into core screening or assessment/review procedures (where appropriate)
- Holistic in approach and consider how a young person's drug use is affecting all aspects of their life.
- Young person centered, but involving the young person in the process and agreement of outcomes as far as possible.
- Lawful. Staff must be aware of any legal responsibilities they have in relation to this work.
- Young people need to know what information will be shared

## **Overview of the Tier system**

Substance misuse services in Torbay are based on the HAS Tier approach. An explanation of this approach is included in the Health Advisory Service Review (The Substance of Young Needs, 2001).

- |        |  |
|--------|--|
| Tier 1 | A generic and primary service providing drug education; information; simple interventions, identification and referral of Young drug users.  |
| Tier 2 | A youth orientated service providing all of Tier 1, plus drug related prevention and targeted education, advice and general counselling service, specific interventions addressing factors in vulnerability.   |
| Tier 3 | A service providing young people's specialist drug services and other specialised services that work with complex cases requiring multi-disciplinary teams based work e.g. Such as specialist substance specific interventions, mental health issues or family assessment. |
| Tier 4 | A service providing very specialised and intensive forms of intervention for young drug misusers with complex care needs. Service may include specialist residential services and mental health teams.   |

Children and young people may need a range of services from a number of Tiers at different times, but should never have exclusively Tier 3 or 4 services without the involvement of Tier 1 and 2. Tier 1, together with Tier 2 services, are key to the development of a broader base, a more comprehensive and holistic response, and the establishment of credibility and trust. Tier 3 services act as a resource base for specialist opinions and focused work. A central aim of the model is to ensure that children and young people remain at the lowest possible tier, according to their need.

Continuity of care throughout the Tiered model is crucial. Where possible the intervention should be co-ordinated and managed within the Tier 1 setting. This will tend to minimise the stigmatisation and normalise the situation of the child and family. For those young people who are not connected with Tier 1, and other services involved should seek to ensure re-integration and provision of services at Tier 1.

## **Where Does Your Agency Fit Within The Tier System?**

### **Tier 1 Practitioners - universal**

The purpose of generic and primary services within this structure is to ensure universal access and continuity of care to all young people. In addition, it aims to identify and screen those with vulnerability to substance misuse and identify those with difficulties in relation to substances. It will be concerned with education improvement, maintenance of health, education attainment and identification of risks or child protection issues. It will also engage in embedding advice and information concerning substances, within a general health improvement agenda. These should be seen as mainstream services for young people.

All Staff / Practitioners in Torbay who have any contact with Young People need to have access to information on Drugs & Alcohol to provide to Young People. This could be in the form of e.g. Leaflets

Website Information e.g. [www.talktofrank.com](http://www.talktofrank.com)

Telephone help lines e.g. Frank 0800 77 66 00

All staff/practitioners should have a basic awareness of drug and alcohol issues in relation to young people and be able to provide information and refer appropriately.

Free training is available for staff agencies working with young people in Torbay on using the multi agency substance screening tool (MASST). The training aims to help staff to establish five things about a young person's substance use/misuse: level of use, knowledge, level of harm/risk, whether a referral or joint working is required, what advice and information work needs to be carried out. For details about the training please contact Torbay care Trust on 01803 210550.

### **Tier 2 Practitioners – targeted prevention with vulnerable groups**

These are Youth orientated services (which includes Multi disciplinary Cluster Teams and also individual agencies e.g. Youth Service, Connexions, YOT, Checkpoint, Children's Services) offered by practitioners with some drug and alcohol experience and youth specialist knowledge. The aim and purpose of this tier is to be concerned with reduction of risks and vulnerabilities, reintegration and maintenance of young people in mainstream services.

The risk of drug and alcohol use and misuse is not uniformly distributed through the youth population therefore a key area for development is targeted interventions within generic children and young people's services for those most at risk from drugs i.e. young people in contact with the criminal justice system, children looked after by the local authority, persistent truants and school excludes, children of problem drug users, homeless young people, teenage mothers and young people not in education, employment or training.

Staff/Practitioners working in Youth Orientated Services need more skills and knowledge than those working in Tier 1 services. Tier 2 Practitioners need to be able to:

- Use a screening tool e.g.: ASSET, APIR, MASST to assess a young person's drug use, the level of harm/risk, and whether a referral or joint working is required.

- Provide appropriate information

- Have a conversation with the young person that is focused around their drug/alcohol use and with the specific aim/risk of reducing harm.

- Provide a series of one to one or group sessions with the aim of reducing harm/risk associated with drug/alcohol use.

- Refer when appropriate to Tier 3 Services

- Work jointly with Tier 3 Services when necessary

Training for staff may be necessary to enable to provide a targeted prevention intervention. This work will fall into the definition of low threshold intervention where the work remains informal rather than being formally care planned or case managed. The aim of the work will be to reduce the risks and vulnerability associated with the young persons substance use by ensuring they have the information and support they need to make informed choices. Work of this nature will then not necessarily require parental consent although there should always be an encouragement for a young person to talk to his/her parents/carers.

Free training is available for staff agencies working with young people in Torbay on using the multi agency substance screening tool (MASST). The training aims to help staff to establish five things about a young person's substance use/misuse: level of use, knowledge, level of harm/risk, whether a referral or joint working is required, what advice and information work needs to be carried out. For details regarding the training please contact Torbay Care Trust on 01803 210550.

Tier 1 and 2 practitioners are able to contact the Under 18 Drug and Alcohol Team (Tier 3) for help and advice on any issue to do with substance misuse.

**Tier 3 Practitioners - specialist**

Young people's specialist drug services and other specialised services, which work with complex cases requiring multidisciplinary team-based work, should be working at this level. The aim of Tier 3 services is to deal with complex and often multiple needs of the child or young person and not just with the particular substance problems. Tier 3 services also work towards reintegrating and including the child in their family, community, school or place of work.

**Tier 4 Practitioners – very specialist**

Tier 4 services provide very specialist forms of intervention for young drug misusers with complex care needs.

**Torbay Under 18 Drug and Alcohol Team (Tier 3 and refers to Tier 4)**

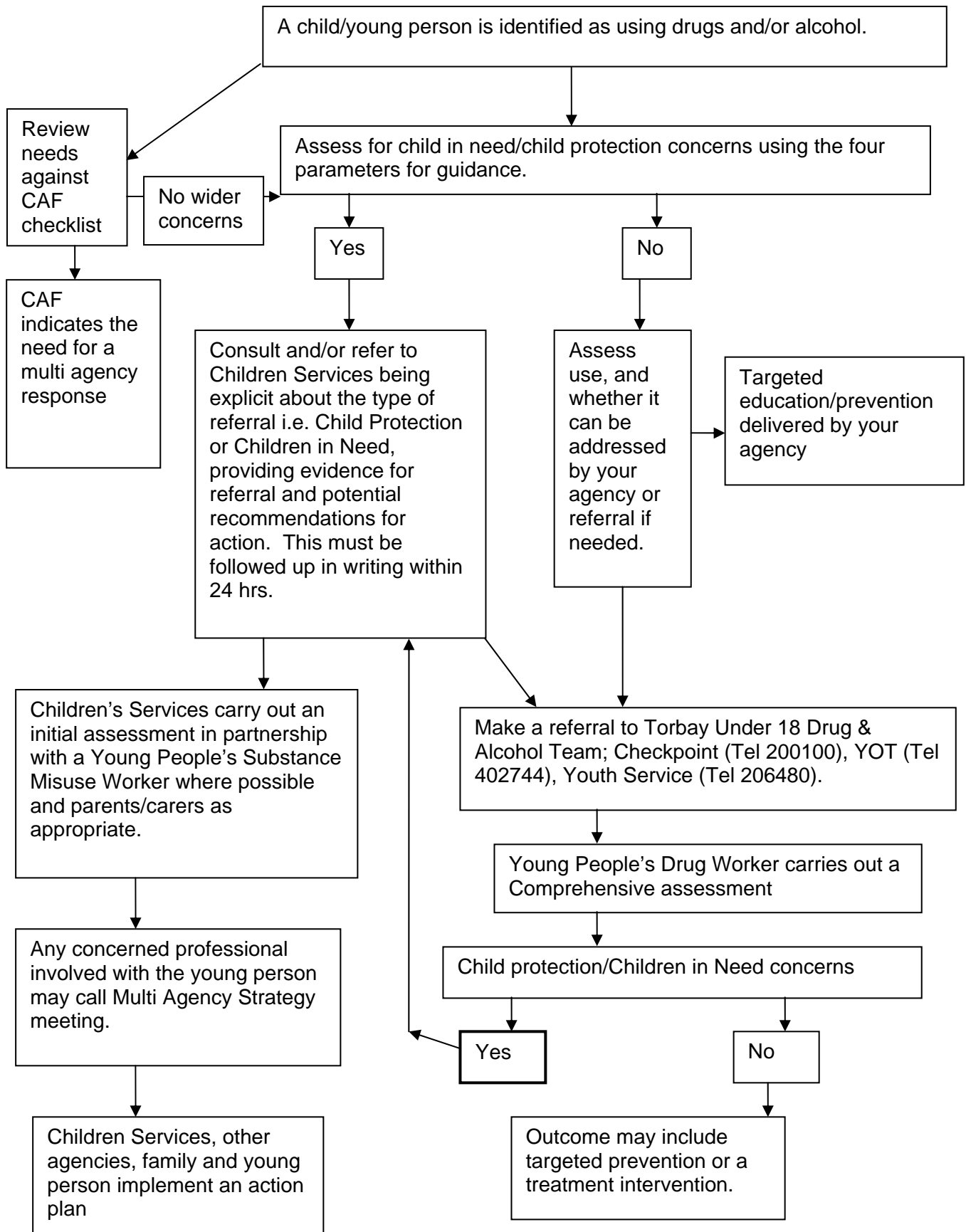
The Torbay U18 Drug and Alcohol Team offer advice, information and specialist interventions to young people (under 18) where drugs/alcohol are an issue, or if the young person is affected by others' substance misuse.

Can see young people at premises in Torquay, Brixham and Paignton at a time that is convenient to the young person.

Provides a consultation service for professionals/agencies working with young people in Torbay.

Provides group work for young people, education in schools, help for parents and training for professionals.

# Flowchart to show Multi Agency Protocol for Children and Young People Involved in Substance Misuse, Including Alcohol.



# Referral form


## REFERRAL FORM TO TORBAY UNDER 18 DRUG AND ALCOHOL TEAM

Referrals can be made either: using this form or by telephone, by a worker or direct by the young person.



Drug and Alcohol Worker <b>Checkpoint,</b> 7 Victoria Road, Ellacombe, Torquay. Tel: 01803 200100 Fax: 01803 291095	Drug and Alcohol Worker <b>Youth Offending Team,</b> Commerce House, Abbey Road, Torquay. Tel: 01803 402744 Fax: 01803 201721	Drug and Alcohol Worker <b>Torbay Youth Service.</b> Oldway Mansion Torquay Road Paignton Tel: 01803 206480
<b>Referrer's Details</b>		
<b>Name</b>		<b>Date of Referral</b>
<b>Job Role and Agency</b>		<b>Tel No</b>
<b>Address</b>		
Have you received MASST training      Yes <input type="radio"/> No <input type="radio"/>		
<b>Young Person's Details</b>		
<b>Name</b>		<b>Date of Birth</b>
		<b>Age</b>
<b>Address</b>		<b>Tel No</b>
Does the young person consent to this referral?      Yes <input type="radio"/> No <input type="radio"/>		
What is the best way to contact the young person?      Phone <input type="radio"/> Text <input type="radio"/> Letter <input type="radio"/>		
<b>Drug and alcohol work undertaken so far</b>		
Leaflets / Information provided      Yes <input type="radio"/> No <input type="radio"/>		
Details of what's been given:		
CAF?      Yes <input type="radio"/> No <input type="radio"/>		
Child Protection Plan?      Yes <input type="radio"/> No <input type="radio"/>		



Substance use																
		Alcohol	Amphetamine	Cannabis	Cocaine	Crack	Ecstasy	Heroin	Ketamine	Legal highs	Methadone	Prescribed drugs	Solvents	Tobacco	Other	Other
<b>Ever Used</b>																
<b>Recent Use (last two weeks)</b>																
<b>Age at first use</b>																
1	<p>Considering the substances you have listed above: How much are you using? How often are you using it?</p>															
2	<p>Why do you use these substances? (e.g. to have a good time with friends, to cope with certain things)</p>															
3	<p>What do you know about the dangers/effects/side effects of the substances you or your friends are using?</p>															
4	<p>Are there any substances you'd like to know more about? If so what?</p>															
5	<p>What kind of places and times of day/night do you like to use substances?</p>															
6	<p>Who do you use substances with? (e.g. alone, friends)</p>															
7	<p>How do you use? (e.g. smoking, drinking, swallowing, sniffing, injecting)</p>															

8	How do you manage to pay for the substances you use? (e.g. getting into debt, selling personal belongings)	
9	Do you always know what you are taking? If so how?	
10	Do you ever take more than one substance at a time? If so, which substances? (this includes alcohol)	
11	In what ways do you keep yourself safe?	
12	What problems (if any) do you think your use causes you? How does it affect your life? Your friends and family? (e.g. physical health and/or emotional/ mental health)	
13	How do you feel about your substance use? (e.g. is it fine, what worries you)	
14	What changes (if any) do you want to make to your substance use? What would help you makes these changes?	
15	What help/advice about substance use have you had before? What did you find useful and what wasn't helpful?	

**Concluding Comments**

## MASST in the wider context

### ***What will happen when MASST has been completed?***

As a result of MASST, the workers role will depend on one of four outcomes:

1. MASST establishes that there is a need for some one off information / advice.  
It may well be most appropriate for this to happen as an immediate result of MASST and no further action may be needed at this time.
2. MASST establishes that there is a need for some on going planned drug education / prevention work. This work will fall into the definition of 'low threshold intervention' where the work remains informal rather than being formally care planned. The aim of this work will be to reduce the risks and vulnerability associated with a young person's substance use by ensuring they have the information and support they need to make informed choices. Work of this nature will then not necessarily require parental consent although there should always be an emphasis on encouraging a young person to talk to his/her parents/carers. You may find it useful to complete an action plan with the young person.

Tier 2 work can involve any of all of the following:

Information and advice in relation to specific substances

Information and advice in relation to substance use generally i.e. Key harm reduction messages such as not mixing substances, not using on your own, not using anything you think you can't identify etc.

Practical support and advice in relation to a range of associated issues that may be affected by their use (e.g. Housing, income, education, sexual health, relationships and crisis support)

Developing self esteem and life skills such as strategies to resist peer pressure

Advocating on the young persons behalf

Increasing motivation to address substance use

Facilitating access to diversionary activities

Developing trust in services available

3. MASST establishes that there is a need for the young person to be referred to Specialist YP Drug and Alcohol Services (The U18 Drug and Alcohol Team). Here there may still be an educational/support role for the worker who undertook MASST. Respective roles should be clarified in the joint working procedures with the U18 Drug and Alcohol Team. The aim of the work will be to reintegrate the young person into mainstream services. A referral to the U18 Drug and Alcohol Team does not require parental consent although the young person should be encouraged to involve his/her parents/carers at all times.

Young people may need to be referred to the U18 Drug and Alcohol Team if one or more of the following is identified as this could indicate high levels of risk.

If the substance is being used to block out distressing feelings, or cope with situations they find difficult

If their level of use is regular and frequent and appears to be not only for recreational purposes.

If they use on their own or with a group of people outside of their 'normal' friendship group.

If they are using large quantities of a substance that they can overdose from ie. Alcohol, heroin or benzodiazepines or using substances they can't identify.

If they are injecting substances

If they are mixing substances dangerously. There is a particular high risk of harm attached to mixing any of the following: alcohol, heroin, methadone, benzodiazepines.

If the financing of the use is increasing their vulnerability. For example, engaging in offending behaviour or selling sexual favours.

If their use is causing significant problems in their life i.e. mental distress, lack of accommodation, debt, school exclusion, job loss or relationship breakdown.

Child protection concerns

4. MASST establishes that there is a need for the young person to be referred to the U18 Drug and Alcohol Team, but the young person does not wish for this to happen. Here the worker who undertook the screening will need to assess:

The risk involved in the young person's use

The skills/knowledge of workers available to support the young person

If the risk level is particularly high then the worker/line manager may need to discuss the case with the U18 Drug and Alcohol Team and consider child protection issues. Here the worker needs to have a very clear agreement with the young person detailing the boundaries of their role. Under no circumstances should they engage in work that could fall into the definition of 'treatment'. Tier 2 work in these circumstances could be defined as tertiary drug prevention, "which aims to prevent and reduce the harm associated with drug misuse" SCODA 1999:19.

They should be aiming to maintain close contact with the young person, reduce levels of harm and develop the young person's motivation to engage in positive change, encouraging them to reconsider a referral to the Torbay U18 Drug and Alcohol Team. The U18 Drug and Alcohol Team will make themselves available to advise and guide staff in this work.

### **Completing Questions asked in MASST**

The questions used in MASST are there as a guide only. In order to help the young person see the process as an exploration rather than an interrogation, it is important that you do not just read out the questions word for word. Use the questions as a prompt for a discussion around the following headings:

#### **Substance Use (Question 1)**

Try to enable the young person to give as full a response as possible rather than just list substances. If they deny using any substances, they may well be telling the truth but it is perhaps advisable to remind them of the purpose of MASST and that they should include any alcohol or tobacco use.

If they still deny using any substances, they may only need increased knowledge of particular substances that their friends may be using and that they maybe considering using.

It is important that you explore the 'highs' relating to their use as well as any potential difficulties. People use substances for a reason and need to be able to reflect on what they like about using to understand what their use is about. You may also help them to reflect on the role of substance use in their life by explaining the difference between experimental, recreational and dependant use.

#### **Knowledge of Substances (Questions 2 – 4)**

These questions are asked to determine gaps in knowledge in relation to specific substances.

Focus particularly on their knowledge of the substances that they say they have used or their friends are using, then spend time exploring their knowledge of other substances. If they tell you about a substance that you have never heard of, own up to this and ask them to tell you what they know about it.

#### **Risk/harm involved in use (Questions 5 – 11)**

This section is designed as a check list to build up a picture of the issues surrounding their use and to pick up on any risk factors. Again, it is important that the young person is taken through a reflective discussion process rather than an interrogation.

Focus on any problem that their use may be causing them. They may have touched on problems earlier in the process and may need reminding of them. They may also need reminding of some of the common problems associated with substance use such as its financial cost and the risk involved in illegal use.

#### **Motivation (Questions 12 – 13)**

The last two questions focus on motivation to change. They may say that they feel fine about their use and they don't feel they need to do anything about it at all. If you feel confident that their use involves them in fairly low risk and creates few problems for them, then you may only need to focus on any gaps identified in their knowledge of substances. If, however, their response to previous questions has identified some potentially high risk activity and problematic use, then you may need to spend time reminding them of what they have said or what you may have witnessed and found concerning.

**There are problems and potential risks attached to all substance use.** Your role is to identify an appropriate response. Individual substances affect people differently. It is advisable to explore the young person's reasons for using and the risks and problems associated with their use rather than make assumptions about particular substances being more dangerous or problematic than others. Regular cannabis use, for example, for many people can cause very few problems. However, people experiencing anxiety or other mental distress may well find cannabis significantly worsens their condition.

## Specialist substance misuse assessment

A specialist substance misuse assessment is not a holistic assessment, but may form part of one. Specialist assessments are defined by Models of Good Practice in joined-up Assessment: Working for Children with Significant and Complex Needs (DfES, 2006c) as:

Having a much more specific purpose (for example, assessments under section 17 of the Children Act (1989), where the main purpose is to determine whether children are in need and if they and their families require services; and Asset, where the main purpose is to assess the risk of offending)  
Undertaken by staff from a particular service or sector  
Generally performed only by staff of a particular occupational or professional group  
Done with children with known issues or where there are specific or acute concerns.

Unless a young person contacts a specialist substance misuse service directly, or via a parent, specialist substance misuse assessments should only be undertaken where a substance – related screening has identified needs that cannot be met by the agency conducting the screening. Not every young person with a substance-related need will require referral for a specialist assessment and intervention from a specialist practitioner. Some low-level substance misuse needs can be met by the person undertaking the CAF or other screening or identification processes; for example, advice, information and risk reduction sessions aimed at infrequent, low-risk substance users.

## Substance misuse as a safeguarding issue

Practitioners should consider whether children or young people are at risk from their own substance misuse. Where this is the case practitioners should act on any concerns that they have, in line with South West Child Protection Procedures [www.swcpp.org.uk](http://www.swcpp.org.uk) .

Examples of substance misuse impacting on safeguarding issues:

A young person caring for another child while under the influence of substances  
Substance misuse problem among young people's parents or carers  
Sexual or physical abuse related to substance misuse  
Self-harm or suicidal behaviour related to substance misuse  
High-risk substance misuse behaviour  
Injection by a third party

The four parameters were developed by the Standing conference On Drug Abuse (SCODA) and the Children's Legal Centre (CLC) (1999) to help determine whether confidential information about

substance use, given by a young person, should be disclosed to a parent or child protection agency on the grounds that there may be a safeguarding issue (see South West Child Protection Procedures [www.swcpp.org.uk](http://www.swcpp.org.uk) ). Decisions about making a child protection referral and about breaching confidentiality should be made in consultation with a line manager and should not be the sole responsibility of one practitioner.

When deciding whether to share confidential information; utilise 'the Four Parameters' as detailed in, First Steps in Identifying Young People's Substance Related Needs, Home Office (2003). The parameters are:

- i.) The age and maturity of the child and young person.  
As a general rule, the younger the child, the more problematic it is to guarantee or maintain confidentiality. There is no age limit in law below which a child cannot enter a confidential relationship, but given the problem of establishing competence, and therefore capacity to consent, it is difficult to envisage children being offered confidential treatment for drug misuse without parental consent or parental involvement, under the age of 13. Indeed it is possible that a failure to inform parents that a child is misusing drugs could lead to a possible negligence action if the drug service or agency failed to take sufficient action to protect the child from harm as result of that drug misuse.
- ii.) The degree of seriousness of drug misuse.  
The more serious the drug (or substance) misuse, the more likely it is that disclosure of confidential information to other agencies will have to be considered. In deciding whether or not to disclose, the service must take into account, the level of substance use and the risks involved. The supply source of the young person's drugs may also be important, particularly if the young person in question is open to exploitation.
- iii.) Whether harm or risk is continuing or increasing.  
Harm from substance use needs to be considered in relation to past, present and potential future behaviour. If there is a clear risk to the child or young person arising from present behaviour or evidence of escalated risk to an unacceptable level, it is important that a service takes steps to ensure the future safety of the child or young person.
- iv.) General context in which drug taking is set.  
Where a child or young person has multiple problems, it is likely that other agencies or professionals will need to be involved to resolve these problems or reduce the vulnerability and risk to the child or young person.

Alternatively you can refer to the NTA guidance document: Assessing Young People for Substance Misuse (NTA, 2007).

## The Criminal Law and Substance misuse.

It is legally possible for a child over age 10 to be charged for one of these offences.

Under the Misuse of Drugs Act it is an offence to:

- Possess a controlled substance unlawfully
- Possess a controlled substance with intent to supply it.
- To unlawfully supply a controlled drug (even where no charge is made for the drug)
- To allow premises you occupy or manage to be used for the purpose of drug taking

Trafficking (supply) attracts the more serious of punishments, including life imprisonment for Class A offences.

**The Medicines Act 1968** regulates drugs that are used for medicinal purposes, and again there are three main categories. A pharmacist can only dispense 'Prescription Only' medicines (POM) against a prescription from a doctor, dentist or prescribing nurse. (There is also a mechanism for pharmacists to supply POM drugs in an emergency without a prescription). The 'General Sales List' (GSL) category allows the medicines to be sold without a prescription in any shop. Pharmacy only medicines (P) can only be purchased from a registered pharmacy under the supervision of a pharmacist. Possession of 'Prescription Only' medicines without a prescription is a serious offence. Drugs such as amyl nitrite, GHB and Ketamine are regulated under the Medicines Act.

**The Road Traffic Act 1972** makes it an offence to drive while under the influence of drugs and drink. Drugs include illegal and prescribed substances. Causing death by dangerous driving could lead to a long prison sentence and an unlimited fine.

**The Licensing Act 1964** is the main piece of legislation relating to the sale and supply of alcohol. It sets down the times alcohol may be served and who it may be served to. The act makes it illegal to sell alcohol to anyone under the age of 18.

The **Cigarette Lighter Refill (Safety) Regulations 1999** is an amendment to the Consumer Protection Act 1987. It makes it illegal to supply gas cigarette lighter refills to anyone under the age of 18. Retailers could face a hefty fine or a prison sentence.

The **Intoxicating Substances (Supply) Act 1985** makes it an offence for a retailer to sell solvents to anyone under the age of 18, knowing that they are being purchased to be abused. It does not make it illegal to own or buy solvents.

**Customs and Excise Management Act 1979**, in conjunction with the Misuse of Drugs Act, makes it illegal to import or export controlled drugs without authorisation. A successful conviction leads to the same penalties as under the Misuse of Drugs Act, although the fines can be more substantial, based on the value of the drugs seized.

**Drug Traffickers Offences Act 1994** gives police the power to seize the assets and income of anyone who is found guilty of drugs trafficking, even if that income is not related to the trafficking of drugs. It also makes it illegal to manufacture or sell equipment for the preparation or use of controlled drugs.

**Crime and Disorder Act 1998** makes it legal to force offenders who are convicted of crime committed in order to fund their drug habit, into getting drug treatment. It also allows for them to be tested for drug usage.

## Local Contact Details:

<b>TORBAY'S UNDER 18s DRUG AND ALCOHOL TEAM</b>	
<p>Drug and Alcohol Workers Checkpoint, 7 Victoria Road Ellacombe, Torquay Tel: 01803 200100 Mobile: 07720940720 Email: steven.hawker@childrenssociety.org.uk nicola.tomkow@childrenssociety.org.uk</p>	<p>The Torbay U18 Drug and Alcohol Team offer advice, information and specialist interventions to young people (under 18) where drugs / alcohol are an issue, or if the young person is affected by others' substance misuse.</p> <p>Can see young people at premises in Torquay, Brixham and Paignton at a time that is convenient to the young person.</p> <p>Provides a consultation service for professionals / agencies working with young people in Torbay.</p> <p>Provides group work for young people, education in schools, help for parents and training for professionals. Young person can self refer or be referred by another (with YP knowledge and agreement).</p>
<p>Drug and Alcohol Worker Youth Offending Team, Commerce House, Abbey Road, Torquay Tel: 01803 402744 Mobile: 07876 258199 Email: stella.allen@torbay.gov.uk</p>	
<p>Drug and Alcohol Worker Torbay Youth Service Tel: 01803 206480 Mobile: 07879 491975 Email: gillian.whatman@torbay.gov.uk</p>	

<b>TORBAY ALCOHOL SERVICES FOR ADULTS</b>	
<p><b>Torbay Primary Care Alcohol Service</b> Walnut Lodge Walnut Road Torquay TQ2 6HP Tel: 01803 604330</p>	<p>The Torbay Alcohol Referral Service is the route for clients or professionals to telephone for advice, information and appointments for specialist interventions for adults where alcohol is an issue. A web based tool also allows online self-referral Training for tier 1 professionals in the use of alcohol screening tools and general alcohol awareness</p>
<p><b>Shrublands Alcohol Service</b> Shrublands House, 8 Morgan Avenue, Torquay TQ2 5RS Tel: 01803 291129</p>	<p>This service is for clients with problematic and complex alcohol use and provides specialist interventions. Referral is through the Primary Care Alcohol Service (see above)</p>


<b>TORBAY DRUG SERVICE FOR ADULTS</b>	
<p><b>Torbay Primary Care Drug Service</b> Walnut Lodge Walnut Road Torquay TQ2 6HP Tel: 01803 604330</p>	<p>Working closely with GP's in the community and in-house prescribers, the service offers a substitute prescribing, group work and key worker package to drug dependent adults aged 18+ with low to moderate needs</p> <p>Provision of open access "drop in" sessions across Torbay for the purpose of assessment, advice &amp; information and support and onward referral to other</p>

	adult drug services as required
<b>Shrublands Drug Service</b> Shrublands House, 8 Morgan Avenue, Torquay TQ2 5RS Tel: 01803 291129	This service is for clients with problematic and complex drug use and provides specialist intervention and access to medical treatment. Referral is through the Primary Care Drug Team (see above)
<b>EDP Drug and Alcohol Services</b> Walnut Lodge Walnut Road Torquay TQ2 6HP Tel: 01803 604330	Provides care-planned support to drug users, particularly those whose primary drug of choice is non-opiate (e.g. crack, amphetamine, cannabis) Provides structured day programme in Torbay (support on a daily basis over an agreed period of time for stable drug users) Referral is through the Primary Care Drug Team as above
<b>Adult Needle Exchange Services</b>	Please contact Torbay Care Trust for details. Tel: 01803 210550

#### PARENTS / CARERS WITH PROBLEMATIC DRUG / ACLOHOL USE

Specialist Health Visitor for substance misuse Tel: 01803 604330 Email: maria.mctiernan@nhs.net	The Specialist Health visitor offers support to expectant parents and parents who have substance misuse issues (Alcohol or drugs) in the Torbay area. She works in a child focused way in partnership with parents and relevant professionals.
---	--

#### OTHER LOCAL NUMBERS

<b>Torbay Young Carers Service</b> Tel: 01803 208365	Offer support to young people, under 18 who look after or help to look after someone who is affected by drugs or alcohol, has a serious illness, disability or mental ill health.
<b>Torbay Stop Smoking Service</b> Union Street, Torquay (opposite Argos) Tel: 01803 299160  Email: <a href="mailto:stopsmoking.torbay@nhs.net">stopsmoking.torbay@nhs.net</a>	Offers support for anybody who wishes to no longer smoke tobacco.
<b>Healthwise</b> 	Health Wize Torbay is a young people's drop in centre offering free and confidential health advice and support on a range of issues. The shop is open Monday to Saturday. Some of the things we cover: <ul style="list-style-type: none"> <li>• Diet and healthy eating</li> <li>• Looking after you – emotional health</li> <li>• Stop smoking</li> <li>• Know your limits – alcohol and drugs</li> <li>• Free internet access</li> <li>• Good sexual health <ul style="list-style-type: none"> <li>o C-Card (free condoms and advice)</li> <li>o Free pregnancy and Chlamydia testing</li> <li>o Free emergency contraception</li> </ul> </li> </ul>

	(NB: pregnancy testing and emergency contraception only available Tuesday and Thursday). Young people can drop in or make an appointment either on their own or with a friend, parent or carer.
<b>Castle Circus Health Centre</b> Castle Circus Health Centre Abbey Road Torquay TQ2 5YH Tel: 01803 656500	The Sexual Medicine Service provides free and confidential testing and treatment services for sexual infections, along with advice on a wide range of sexual health and contraceptive issues. We provide these services from our bases at Castle Circus Health Centre and Torbay Hospital, as well as from a number of community sites throughout the area.  Walk in clinics are available at Castle Circus Health Centre every weekday:  Morning: sexual infection screening  Mon & Wed afternoons: sexual infection screening & contraception services (under 25s only)
<b>Child Protection</b> Torbay Safeguarding Children's Board Daytime Tel: 01803 208100 Out of hours: Tel: 01803 524519	Protecting children and young people is everyone's business and this website brings together information for children and young people, information for their families and information for anyone who works with them. It also provides an overview of the responsibilities, structure and work of the Torbay Safeguarding Children Board.
<b>Cool Recovery</b> Morgan Avenue, Torquay Tel: 01803 299511	Cool Recovery is an independent charity providing support, information, volunteering opportunities and a range of activities for family, friends and people recovering from or affected by mental health issues which may also involve drugs and alcohol.

## OTHER NATIONAL NUMBERS

<b>FRANK</b> Tel: 0800 77 66 00 <a href="http://www.talktofrank.com">www.talktofrank.com</a>	24 hour helpline/website which provides free and confidential advice, support and information about any drug issue. FRANK also have educational leaflets that they can send you free of charge.
<b>Drink line</b> Tel: 0800 917 8282	Providing information and advice on alcohol issues
<b>Release</b> Tel: 0207 324 2989 or 0845 4500 215	24 hour helpline offers information on arrest, the law and legal issues
<b>Crime stoppers</b> Tel: 0800 55 51 11	To give anonymous information on those suspected of a crime
<b>Parentline plus</b> Tel: 0808 800 2222	Support and information for anyone parenting a child.



## References

The National Treatment Agency Assessing Young People for Substance Misuse (NTA, 2007)

First Steps in Identifying Young People's Substance Related Needs (Home Office, 2003)

Health Advisory Service (HAS) Review (2001) The Substance of Young Needs.

South West Child Protection Procedures

Models of Good Practice in joined-up Assessment: Working for Children with Significant and Complex Needs (DfES, 2006c)

## Further Information

### Useful websites:

**[www.addaction.org.uk](http://www.addaction.org.uk)** (Info & advice drugs & alcohol)

**[www.drugscope-dworld.org.uk/wip/24/index.htm](http://www.drugscope-dworld.org.uk/wip/24/index.htm)** (Young people's info and advice about drugs and alcohol)

**[www.familyrapp.com](http://www.familyrapp.com)** Answers to parenting questions – includes a drug section.

**[www.talktofrank.com](http://www.talktofrank.com)** (Info & advice drugs and alcohol. FRANK also have leaflets that they can send you free of charge which explain all about the different types of drugs.)

**[www.thesite.org](http://www.thesite.org)** A guide to the 'real world' for young people ages 16 – 25.

**[www.wrecked.co.uk](http://www.wrecked.co.uk)** Information and advice on alcohol.

**[www.torbay.gov.uk/index/payp-index/payp-home.htm](http://www.torbay.gov.uk/index/payp-index/payp-home.htm)** The website for young people in Torbay. Follow the link for 'staying safe' to access drug and alcohol information.

**<http://www.nice.org.uk/nicemedia/live/11379/31939/31939.pdf>** National Institute for Health and Clinical Excellence produce public health guidance on Community-based interventions to reduce substance misuse among vulnerable and disadvantaged children and young people.

**<http://www.torbay.gov.uk/index/health-socialcare/childrens-families/tscb.htm>** Torbay Safeguarding Children's Board website.

This document can be made available in other formats.  
For more information please contact 01803 208903